

# BORACOL 10RH

## MASONRY BIOCIDES

(INORGANIC BORON)

Product Data Sheet  
HSE No 4911

### Uses

- **To Sterilize the growth of mould, algae and lichen on brickwork, masonry, tiles, and plasterwork.**
- **To sterilize and prohibit the growth of mould in kitchens and bathrooms.**
- **As a sterilization pre-treatment for general and proprietary decorative coatings for interior and exterior masonry etc.**
- **As a surface biocide for the sterilization of fungal growth such as dry rot.**

### PRODUCT USES

#### Product Description

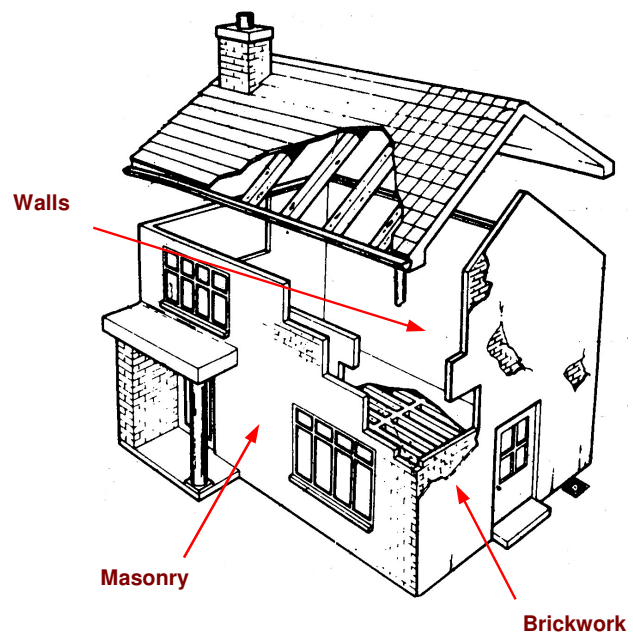
Boracol 10RH is a clear, ready for use solution of 10% disodium octaborate and 2% active Alkyldimethylbenzyl Ammonium Chloride blended with water and special carriers (water soluble).

#### Coverage

Brush – 1 litre to 6-8m<sup>2</sup>

Coarse spray – 1 litre to 4-5m<sup>2</sup>

Irrigation – 2½ litres per m<sup>2</sup> for 230mm (9") brickwork or 10 litres per m<sup>2</sup>



## CHANNELWOOD PRESERVATIONS LIMITED

### *Preservative Systems & Products for Timber*

13 Clayhill Industrial Park, Neston, South Wirral, Cheshire, CH64 3UG.

Tel : (0151) 342 3728 Fax : (0151) 342 9472

email: [info@channelwood.co.uk](mailto:info@channelwood.co.uk)

## USING THE PRODUCT TO STERILIZE THE GROWTH OF MOULD, ALGAE and LICHEN

### Surface preparation

Remove traces of the growth from the surface to be treated using some of the undiluted fluid and a suitable brush or scraper. Allow the surface to dry. In certain exterior circumstances, such as on tiled roofs, cleaning the growth may be difficult or undesirable. In the case apply the fluid as directed and allow natural weathering to perform the cleaning effect in due course.

### Application

Using a brush or course spray, apply the first coat of the fluid liberally on to the required surface. Allow to dry thoroughly before applying the second coat. When the second coat is dry a decorative paint of your choosing may be applied.

### Finishing

When dry Boracol 10RH may be decorated as required. For exterior applications, where longer maintenance cycles may be required, Boracol 10RH may be decorated with all known exterior surface coatings.

## USING THE PRODUCT TO STERILIZE DRY ROT

### Surface preparation

Use a wire brush or similar to remove and thoroughly clean any surface fungal growth or strands. Mortar joints should be raked out to a depth of 10mm.

### Application

Using a brush or course spray, sterilize the areas to be treated with two coats of Boracol 10RH. Oversites should be thoroughly treated until saturated with fluid.

In instances where the masonry has been severely attacked by dry rot, (hyphae have deeply penetrated mortar), it is advisable to use traditional irrigation treatment to give deep penetration of fluid.

Walls should be drilled at a downward angle to  $\frac{2}{3}$  rds depth at staggered centres of 230mm (9"). Such instances would include the following:-

- a) To create a cordon sanitaire between an outbreak and adjacent timbers that are currently unaffected.
- b) To treat fungus and protect remaining timbers in situations where the presence of ornate plasterwork etc may make the stripping of walls impractical for full examination and surface treatment.
- c) To saturate the base of an infected wall abutting a concrete floor under which the fungus may have become established eg; on partially buried timber debris.
- d) In certain situations where there is an infected party wall between properties.

N.B. Do not use atomizer sprays. Always ensure that there is adequate ventilation and that water tanks and electric points and circuits etc. are correctly protected

### Other information

Drying time:- Will be dependant upon environmental conditions such as temperature and humidity etc. at the time of application. This product does not evaporate as such like conventional coatings but "creeps into" the substrate.

Cleaning equipment:- Tap water is sufficient.

Shelf life:- Correctly stored the product has a shelf life of six to twelve months.

Safety recommendations :- Read and understand full MSDS information before use. Do not swallow. Protect eyes and skin. Keep away from children, animals, foodstuff and drink. Store safely in original containers ensuring that they are tightly sealed. Keep in a cool place but do not allow the product to freeze.

Standard packaging:- 5 litre and 25 litre polykegs.